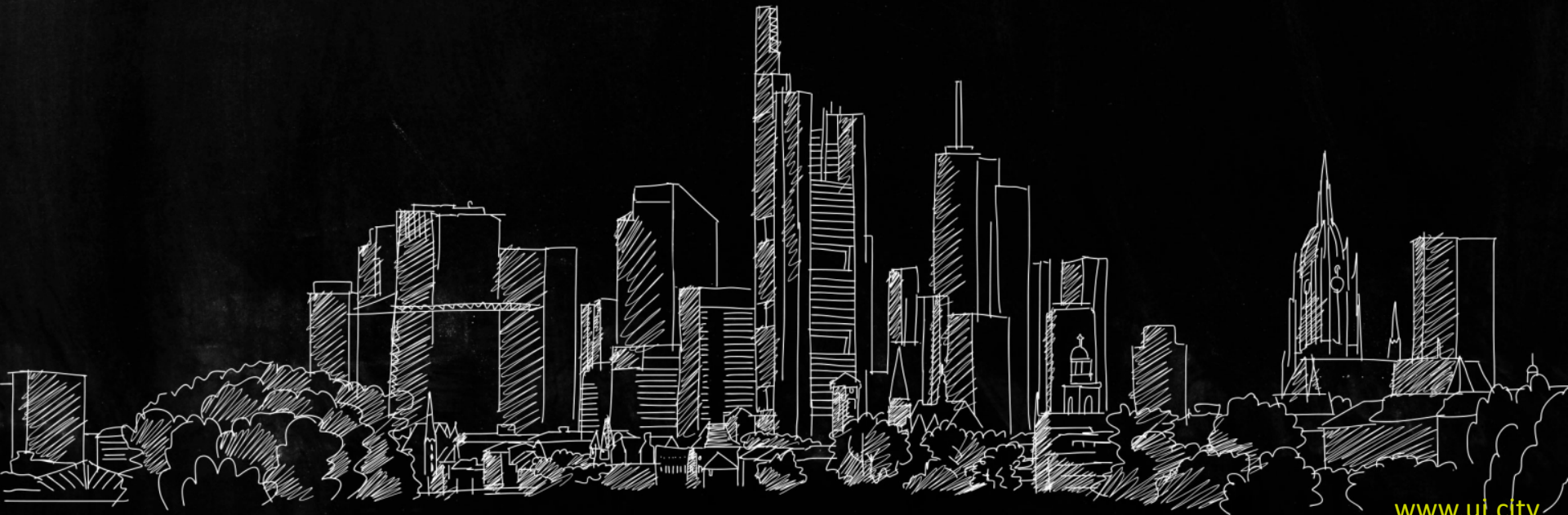




making cities even smarter

the urban institute®

International Smart City Plans, Experiences, Success Factors



European Dimension



European Innovation Partnership on Smart Cities and Communities

The EIP-SCC is an initiative supported by the **European Commission**.

Aiming at overcoming market fragmentation, the EIP-SCC brings together **cities, industry, financiers, citizens** to improve urban life through more sustainable integrated solutions.

Its Market Place has already **5.300 members from 31 countries**.

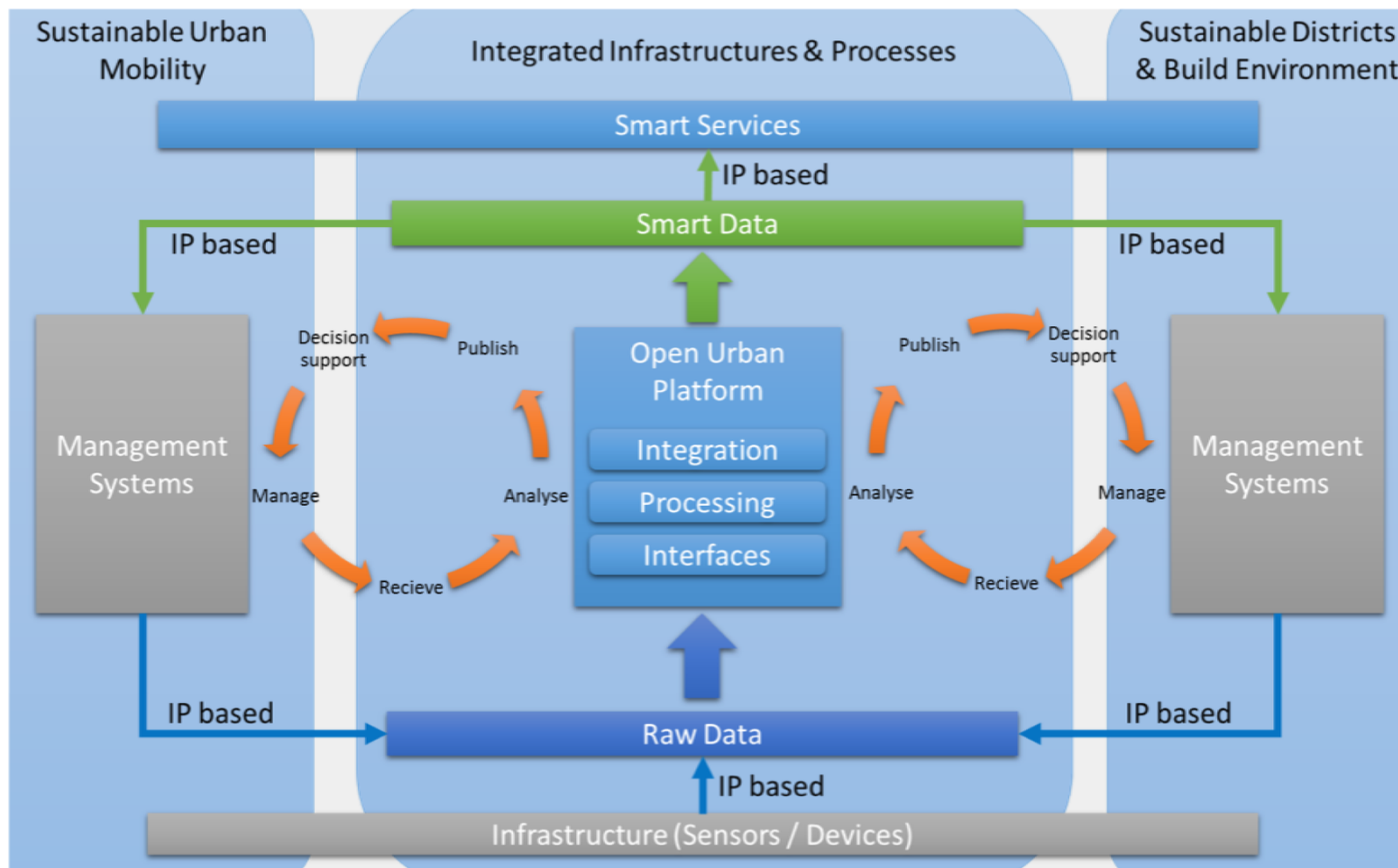


Urban Data





- Real-time data feeds using open connectors to large variety of types of urban sensor
- Pre-processing of incoming data feeds for real-time event management (sub-second)
- Visualization of the data to provide insight to decision makers
- OpenAPIs re-use and repurpose of urban (IoT) data



DIN SPEC 91357

How should a high-level architecture look like to meet pan-European and thus worldwide demand by cities and operators of urban infrastructures?

- Consortium assembled based on EIP SCC stakeholders and other interested parties in Germany
- 8 industry representatives
- 5 cities – the „Big 4“ and a small city representative
- 1 academic

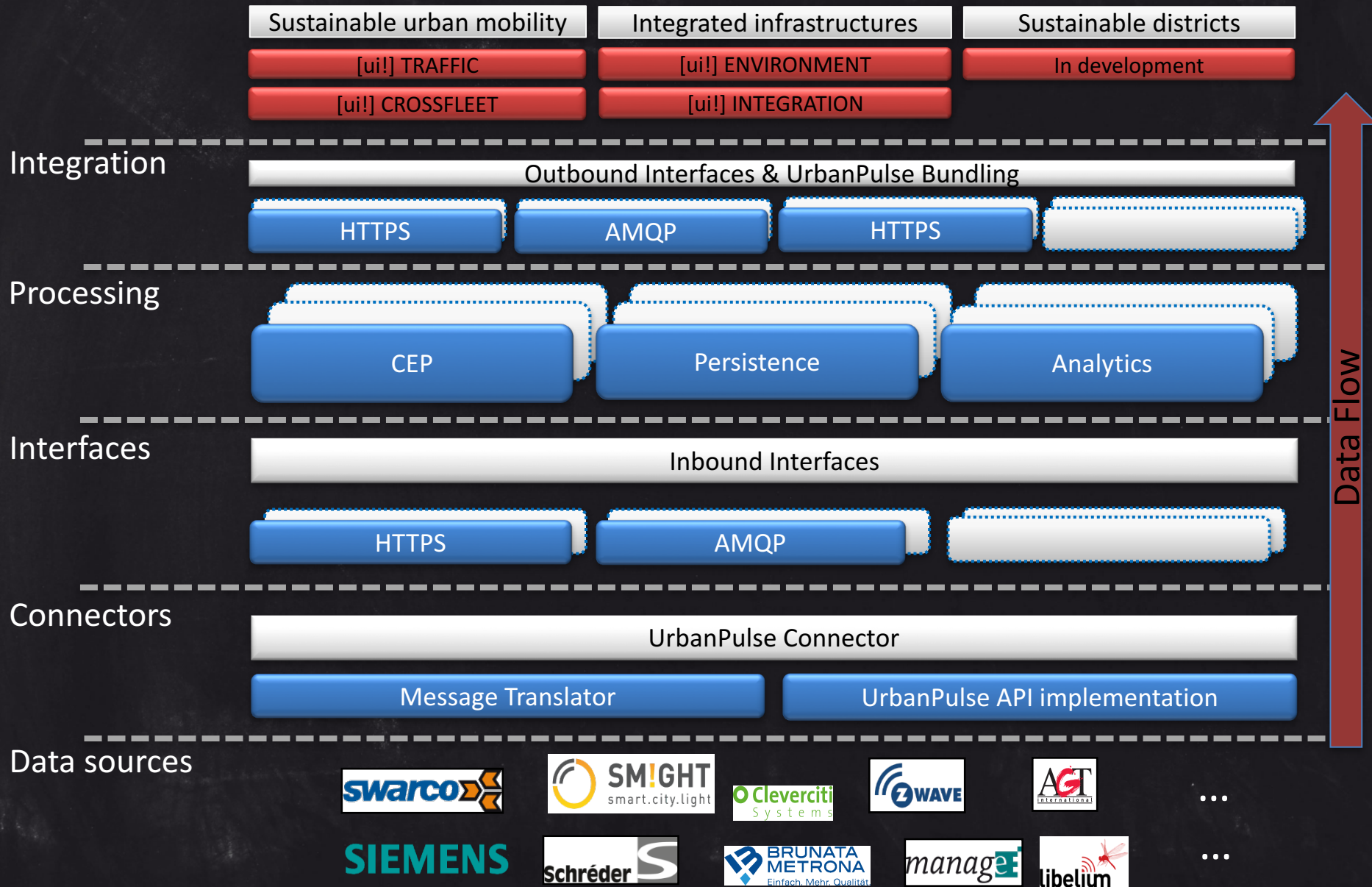
DIN SPEC 91357

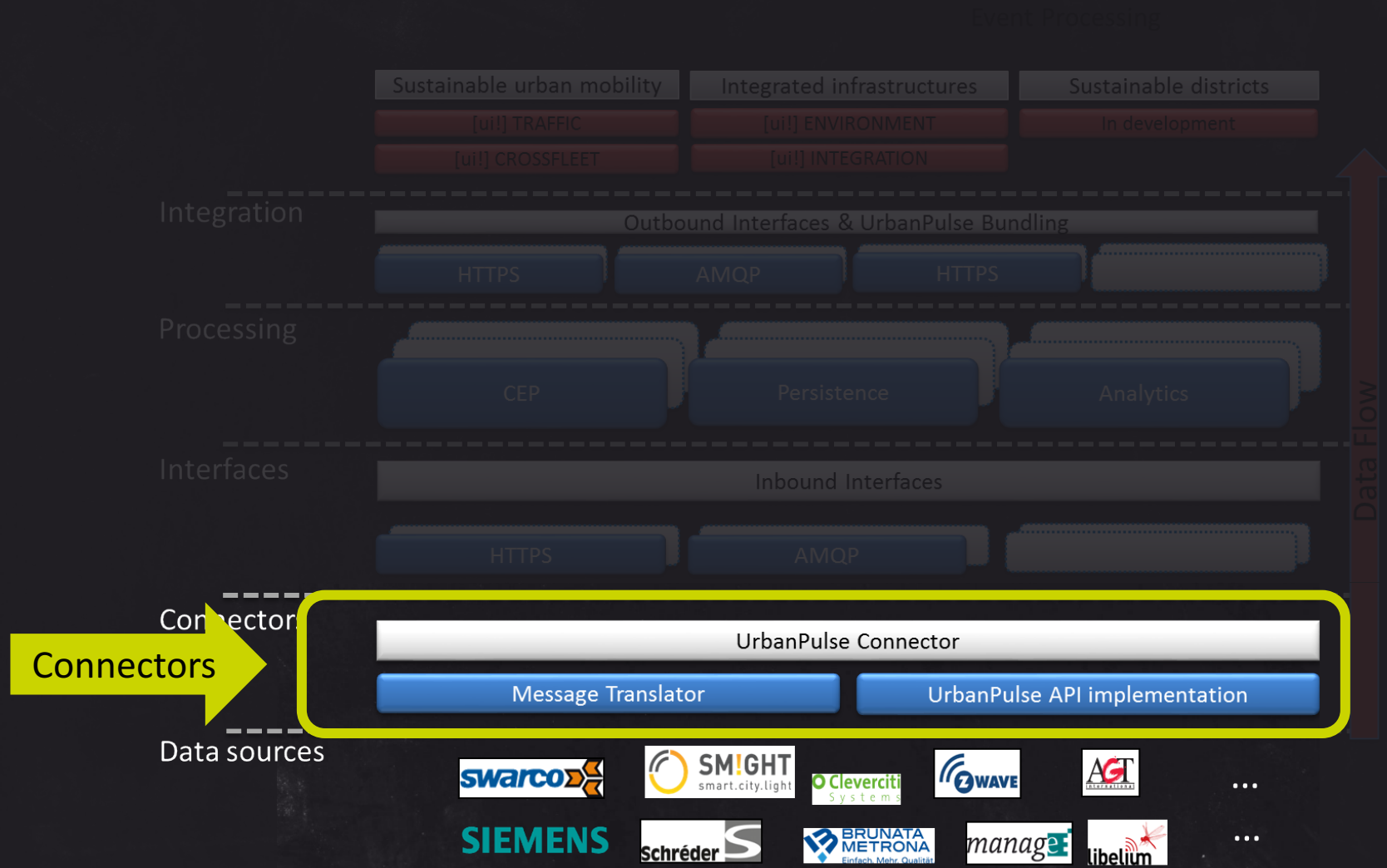
Outcome?

- Extended and deepened the reference architecture to cope with all issues addressed by cities and industry
- High Level reference architecture for open urban platforms
- High Level description of Open API and relation to existing / in-development technical standards
- Use cases on how an OUP can serve the needs
- Classification of business and operational models

[ui!] UrbanPulse







Connectors allow the connection of different heterogeneous data sources in the domains:

- Energy
- Traffic
- Building management
- Environment

Tasks

- Communication with the UrbanPulse API
- Authentication
- Transformation of raw data

List of connectors

- 45+ connectors to different systems available

Sample set of available connectors

Sustainable urban mobility



Integrated infrastructures



Sustainable Energy districts



Digital City Darmstadt



Darmstadt mit [ui!] zur "Digitalen Stadt"

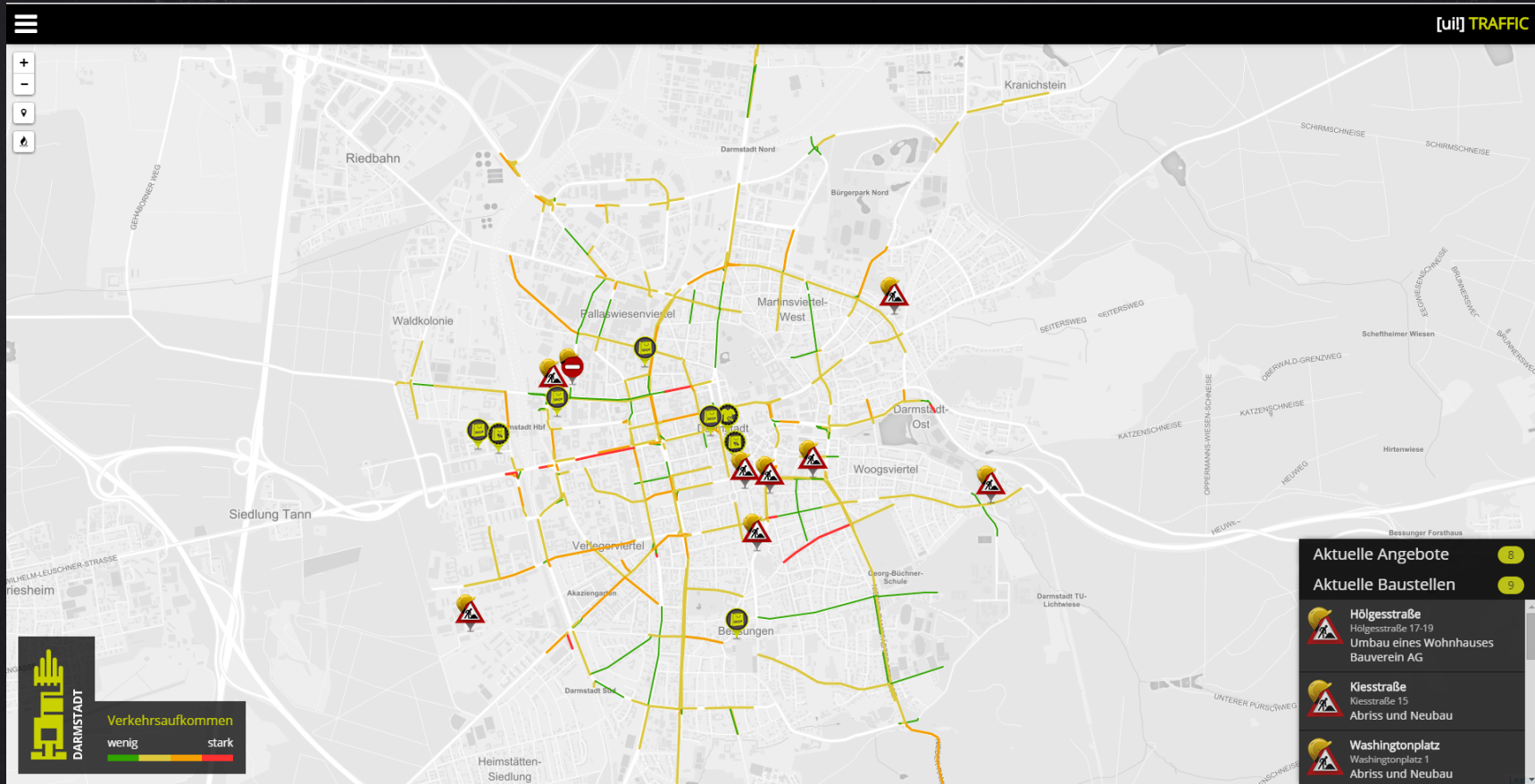


OB Jochen Partsch und Bundeswirtschaftsministerin Brigitte Zypries bei der Urkundenübergabe © Wissenschaftsstadt Darmstadt

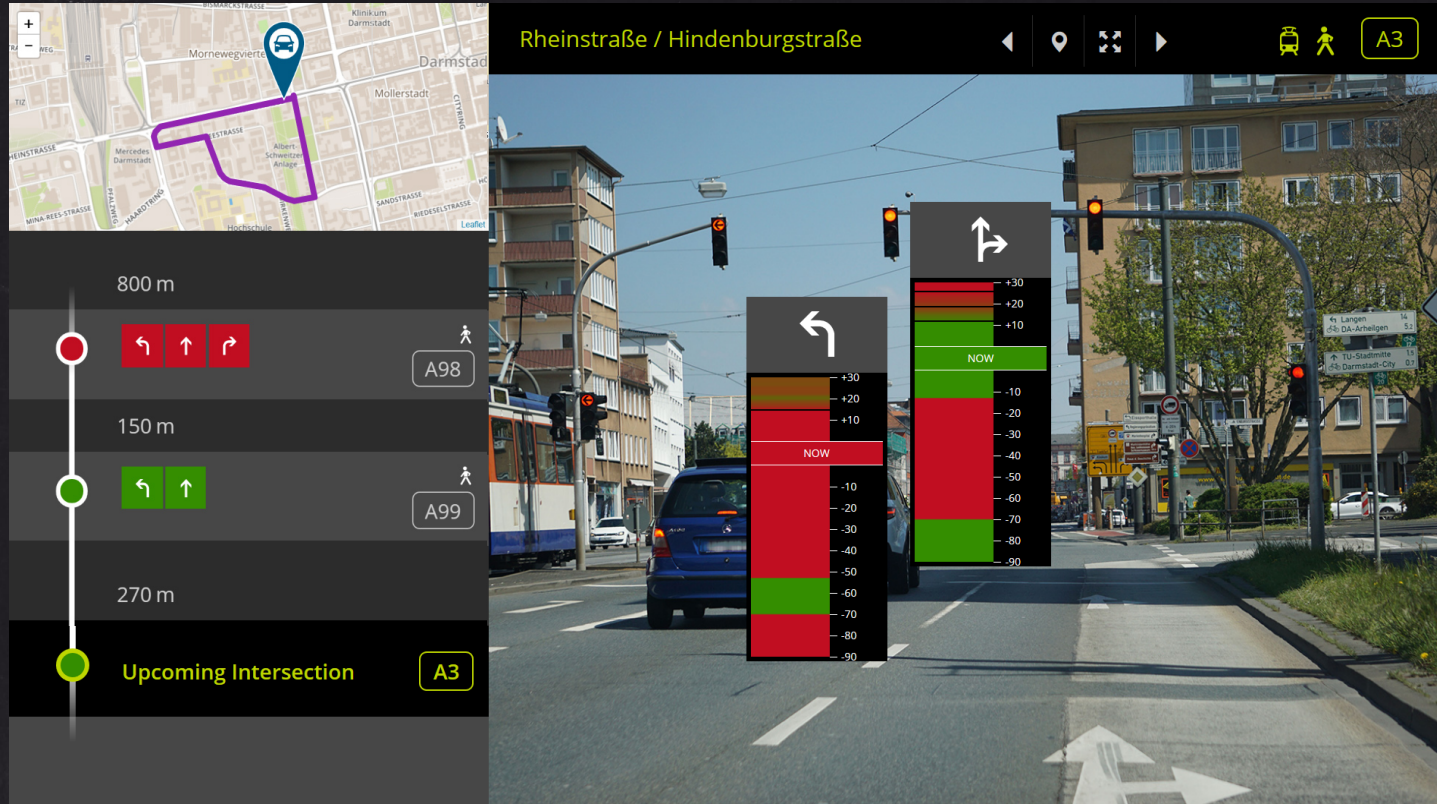
Die Wissenschaftsstadt Darmstadt ist Gewinner des Wettbewerbs „Digitale Stadt“, den der Digitalverband Bitkom gemeinsam mit dem Deutschen Städte- und Gemeindebund (DStGB) ins Leben gerufen hat. Bei der Erstellung des Antrages war [ui!] mit CEO Prof. Dr. Lutz Heuser, neben mehr als 20 Partnerunternehmen, maßgeblich beteiligt.

Neben den Bereichen Energieversorgung, Schulen, und dem Gesundheitswesen soll insbesondere der Verkehrssektor mit neuesten digitalen Technologien ausgerüstet und ausgebaut werden. Zudem sollen künftig die öffentliche Verwaltung innovative Online-Anwendungen und der Handel

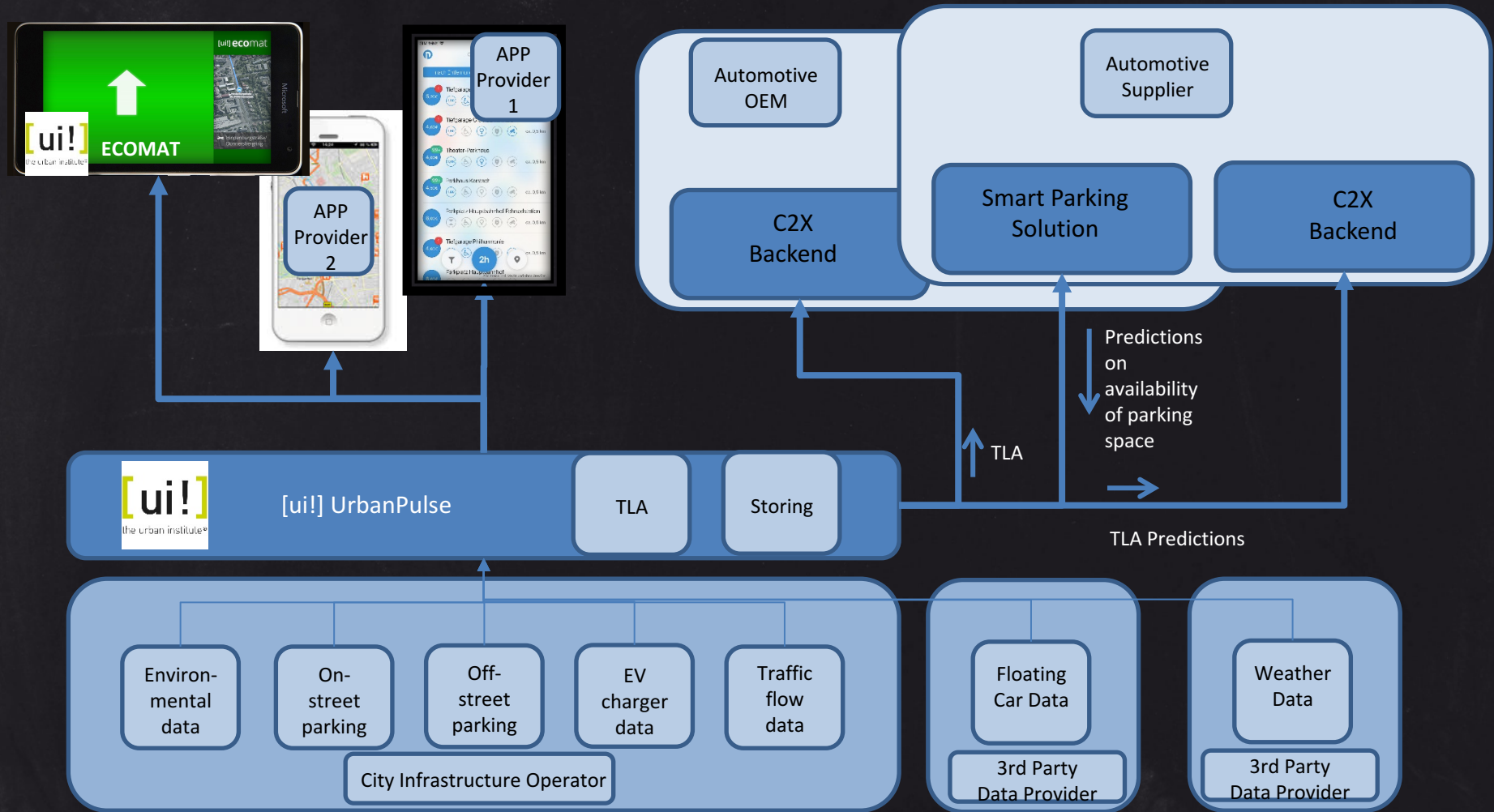
Realtime traffic information for the citizens



Traffic light assist - Web App







Smart Region Sunshine Coast





Integrated multi-functional Humble Lampposts.





Smart Services Portfolio





[ui!] INTEGRATION

Public Internet access as a basis for integrated urban infrastructures.



[ui!] TRAFFIC

Traffic information in real time at a glance for a future-oriented, sustainable urban mobility.



[ui!] CROSSFLEET

Electric vehicles as an innovative business model to optimize the use of electric mobility within the mobility service of fleets.



[ui!] PARKING

Rapid, sustained and real-time overview of the current parking situation within a city.



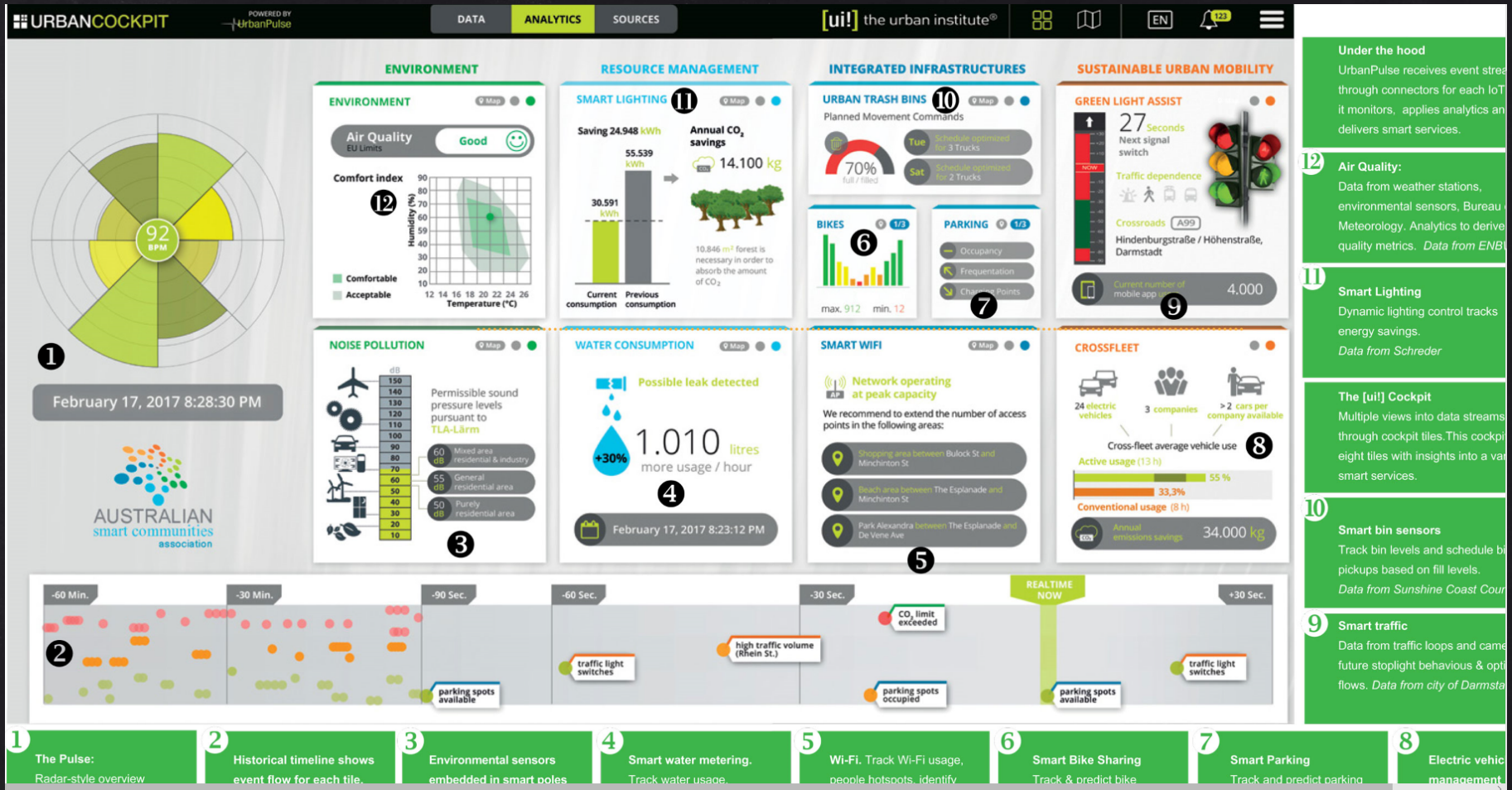
[ui!] ENVIRONMENT

Climate data from the urban environment, prepared and displayed for citizens of the city.



[ui!] ENERGY

Real-time energy consumption and recovery data as well as energy and security management for property & lodgings.



**CHEMNITZ**

Zwickauer Straße 223a
D- 09116 Chemnitz
T +49 (0) 371 8 57 98 59
chemnitz@the-urban-institute.de

DARMSTADT

Julius-Reiber-Straße 15a
D- 64293 Darmstadt
T +49 (0) 6151 4 93 20 60
darmstadt@the-urban-institute.de

MÜNCHEN

c/o GATE, Lichtenbergstr. 8
D- 85748 Garching bei München
T +49 (0) 89 54 84 20 95
muenchen@the-urban-institute.de

BERLIN

Fasanenstraße 3
D- 10623 Berlin
T +49 (0) 30 208 47 24 40
berlin@the-urban-institute.de

WALLDORF

Haydnstraße 34
D- 69190 Walldorf
T +49 (0) 6151 49 320 60
walldorf@the-urban-institute.de

New York

One World Trade Center
285 Fulton Street, Suite 8500
New York, NY 10007
Tel +1-212-220-7177
usa@ui.city

Australia

c/o Innovation Centre
90 Sippy Downs Drive
Caloundra 4556 QLD Australia
T +61 411 511 122
australia@ui.city

Hungary

Egry József u. 18, V1 Building C wing.
Budapest, 1111,
Budapest University of Technology
and Economics
T (+36) 1 463 34 19
hungary@ui.city

Thank you



*..making cities
even smarter*

